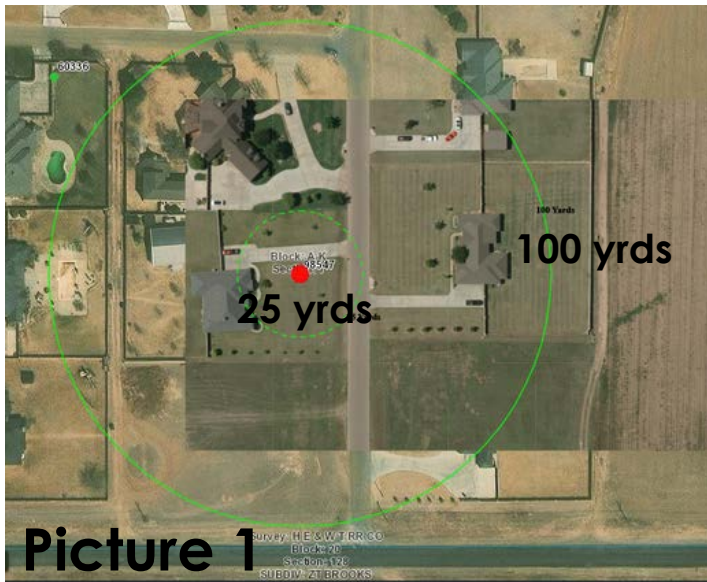


# Registering your Domestic/Exempt well provides you spacing rules = property protection

In Picture 1 you see a house in Highland Oaks, Lubbock Co., that is a domestic registered well #98547

Well Production	Minimum Distance from nearest Valid Well or Proposed Well Site located in the Ogallala /Edwards-Trinity (High Plains) Aquifer	Minimum Distance from nearest property line
17.5 to 70 gpm	100 yards	25 yards
>70 up to 165 gpm	200 yards	50 yards
>165 up to 265 gpm	300 yards	75 yards
>265 up to 390 gpm	350 yards	87.5 yards
>390 up to 560 gpm	400 yards	138 yards
>560 up to 800 gpm	500 yards	238 yards
>800 gpm	540 yards	278 yards

Any new wells 17.5 to 70 gpm must space off of #98547 100 yards



**Picture 1**

In Picture 2

Any new wells >70 up to 165 gpm must space off of #98547 200 yards

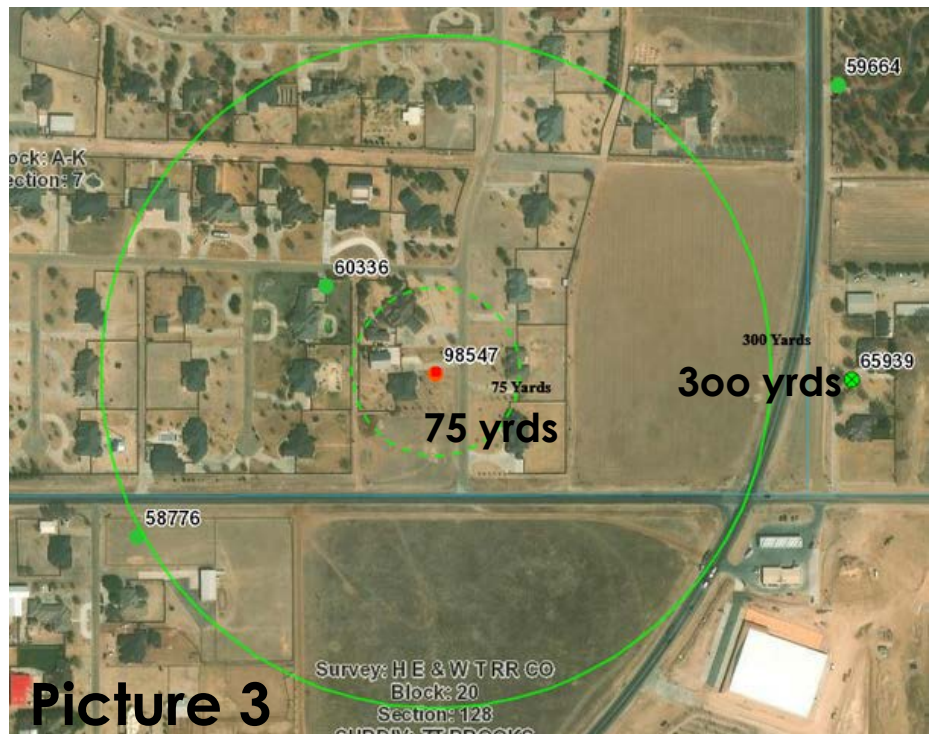


**Picture 2**

In Picture 3

Any new wells >165 up to 265 gpm must space off of #98547 300 yards

**\*\* According to our records most wells in our District are pumping around 165-265 gpm**



**Picture 3**